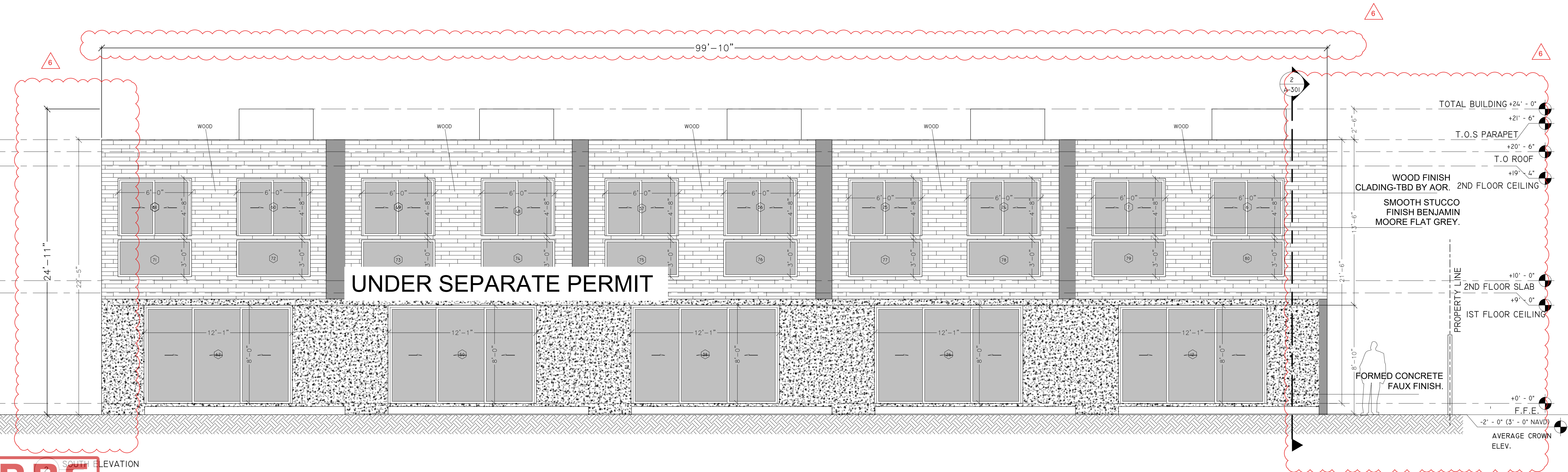


1 WEST ELEVATION
1/4" = 1'-0"



2 SOUTH ELEVATION
1/4" = 1'-0"

DRC
PZ24-12000008
12/17/2025



CONSULTING ENGINEER
ALIOSKAR GANEM P.E.
FL. LIC. No. 74745
ECO POMPAÑO TOWNHOME DEVELOPMENT

3229 NE 5TH ST, POMPAÑO BEACH, FL. 33062 UNIT 4
(ID No. 4843-31-08-0284)

NOTES/COMMENTS	
2	09-12-24
3	11-02-24
4	02-10-2025
5	10-10-2025
REVISIONS / SUBMISSIONS	

DRAWN BY: AG
CHECKED BY: AG
INITIAL DRAWING RELEASE DATE: ISSUE DATE

ELEVATIONS

A-200.4